

\$875,000 - #1012 -15 STOLLERY POND CRES

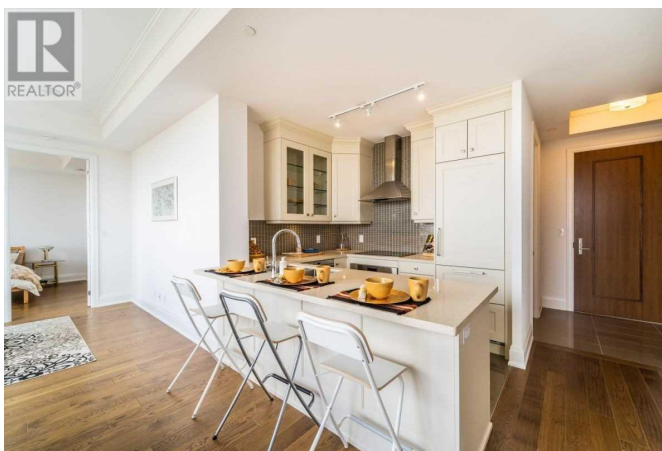
Listing ID: N4512288

\$875,000

3 Bedrooms, 2 Bathrooms Single Family

#1012 -15 STOLLERY POND CRES,
Markham, Ontario, L6C0Y4

You Must See This, Resort Life-Style Condo. Penthouse Boasts Amazing Views O/Looking Golf Course. 10' Coffered Ceilings, Master Retreat W 5 Piece Ensuite & W/I Closet. Spacious Living/Dining W W/O To Private Terrace. Open Concept Kitchen, High End Appl's., Quartz Counter & B/Bar. Private Den Beside Entrance W French Doors. Large 2nd Bedroom W/I Closet. Fabulous Windows & Hardwood/Porcelain Floors Throughout. Ensuite Security, 2 Parking & 2 Lockers!**** EXTRAS **** B/I Wolf Cook Top/Stove, Micro, Integrated Sub-Zero Fridge, D/W, Wine Fridge. Full Size Whirlpool Front Load W/D, 'Grohe' Kit/Bath Fixtures, Massage Jets In Master/Shower, Side By Side Parking Close To Elevator, 2 Lockers By Parking. (id:17113)



MLS®, REALTOR®, and the associated logos are trademarks of The Canadian Real Estate Association

Data Provided by: Toronto Real Estate Board

Last Modified: 12/09/2019 03:38:30 PM

Listing Office:HOMELIFE LANDMARK REALTY INC.